



SWING MOUNT

KEY FEATURES

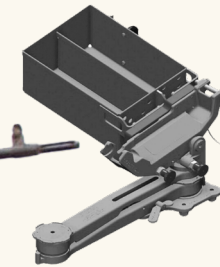
IC431 Stainless Steel or Aluminium.

Combat Proven by Coalition Forces in the MEAO.

Modern, low profile and maintenance free design.

Smooth and reliable bearing pivot point function.

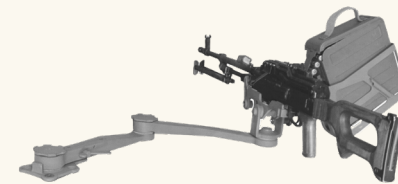
Suitable for both land and sea platforms.



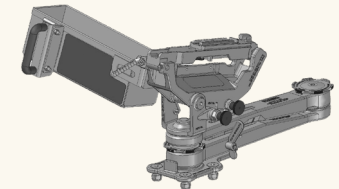
MK48 Swing Mount
Part No. P10197



M60 Swing Mount
Part No. P10241



PKM Swing Mount
Part No. P10352-350



MG3 Swing Mount
Part No. P10076

TECHNICAL SPECIFICATIONS

Weapons Compatibility: MAG58/M240, Minimi 7.62mm/M249, PKM, MG3/4/5, M60, MK48.

Ammunition Tray Capacity: 7.62mm / 5.56mm - 200 rounds.

Elevation/Depression: +80°/-45°

Weapon Traverse: 360° depending on mounting position.

Stainless Steel Mass: 20kg (excluding weapon).

Aluminium Mass: 15kg (excluding weapon) - Part No. P10040.

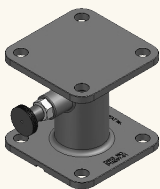
OVER 35,000 SOLD WORLDWIDE

ADAPTORS

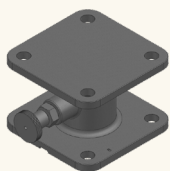
Designed for seamless integration and peak performance across a variety of soft-skinned and armored vehicles.

Our current adaptor range includes the Separator LAV, Stryker, Adjustable pedestal, 3 Inch / 4 Inch

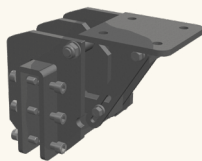
Separator, 'B' Pillar Clamp-on (Roll cage adaptor) and Clamp-on 30 (Vertical Armour surface).



3 Inch Separator
Part No. P10091



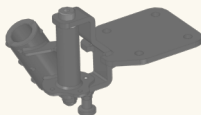
4 Inch Separator
Part No. P10097



Clamp-on 30
Part No. P10052



LAV Separator
Part No. P10090



'B' Pillar Clamp-on
Part No. P100646



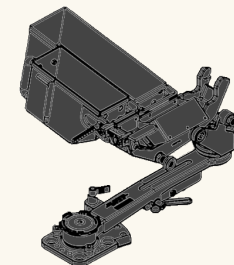
Adjustable Pedestal
Part No. P10096-50

SINGLE ARM SWING MOUNT

The Single Arm Swing Mount is a compact, lightweight, and exceptionally durable solution crafted from Stainless Steel. Our integrated travel lock ensures secure transport, while the standard

ammunition tray provides convenient storage. This versatile mount is perfect for a range of applications, offering a robust and reliable platform for various tools, equipment, or accessories.

“
**LOW COST SOLUTION
FOR UTILITY VEHICLES**
”



TECHNICAL SPECIFICATIONS

Weapons Compatibility:	MAG58/M240, Minimi 7.62mm/M249, PKM, MG3/4/5, M60, MK48.
Ammunition Tray Capacity:	7.62mm / 5.56mm - 200 rounds.
Elevation:	+60°
Depression:	-10° Stop/ -30° Override
Weapon Traverse:	350° (adjustable at increments).
Mass:	16.8 kg ~13 kg (excluding weapon).
Part Number:	P10426-50 - Stainless Steel TBC - Aluminium.



*SWING MOUNT RANGE CUSTOMER CUSTOMISATIONS UPON REQUEST