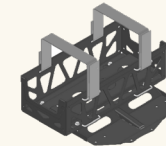


OPTIONAL EXTRAS

Designed to enhance comfort, efficiency, and capabilities, these additions offer tailored solutions for diverse customer needs



Stowage Basket



Ammunition Stowage Basket



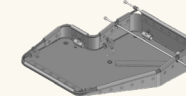
Gearbox (Direct drive, Planetary & B.S.O Gearbox)



Retractable Wire Cutter (front and rear)



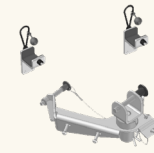
Spare Barrel Holder



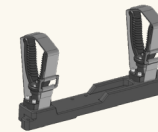
Spent Case Catcher



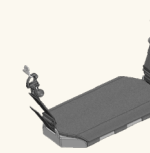
T&E Mechanism



Personal Weapon Holder



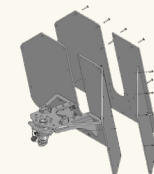
Personal Weapon Holder



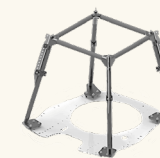
Rigid Sling Seat



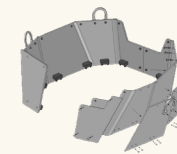
Gunner Foot Stand



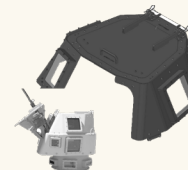
Front Shield Kit (STANAG Level 1,2,3)



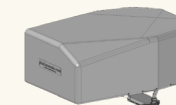
Cage Type Wire Cutter



Main Shield Kit (STANAG Level 1,2,3)



Overhead Protection Kit



Protected Weather Cover



Rain/Sun Cover

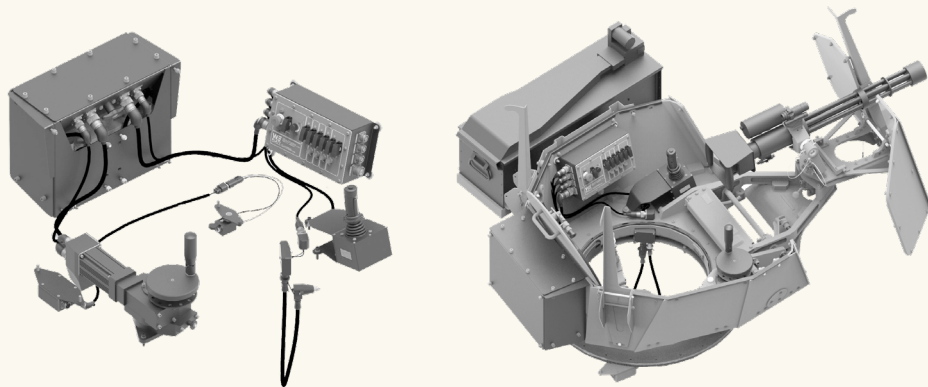


E-DRIVE

Designed to reduce operator fatigue, operators can traverse weapon stations with heavy payloads on gradients from 0° to 30° elevations via simple joystick inputs.

KEY FEATURES

- Compatible with existing Platt weapon stations.
- Integrated systems control module for power management.
- Resettable circuit breaker protection and zero vehicle cabin intrusion.
- Joystick dead-man switch and emergency stop button for safety.



MR550 Ring Mount with Mini gun and eDrive.

TECHNICAL SPECIFICATIONS

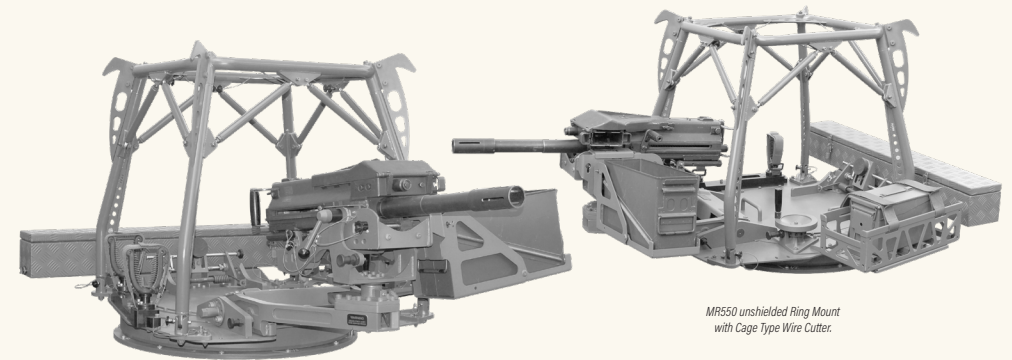
Display:	10 Bar LED display of Battery Pack Voltage status.
Operating Temperature Limits:	-40° /+80°
Power and Battery:	Self-contained 24VDC battery pack up to 2 hours (no slip ring).
Battery Recharge:	28VDC vehicle power supply (0.5-5A max) or Solar charging.
Rotation Speed:	Approx. 0.8 - 9RPM (configuration dependent).
Payload:	30° gradient

CAGE TYPE WIRE CUTTER

Our robust wire cutter kit protects operators from high-tensile wire threats in combat environments. The symmetric design enables fitments to any ring mount orientation.

KEY FEATURES

- Defeats all specified wire types.
- Cost-effective spare parts and easily configured for future upgrades.
- Ultra-lightweight, high strength and corrosion resistant.
- Modular design for adaptable accessories.



MR550 unshielded Ring Mount with Cage Type Wire Cutter.

TECHNICAL SPECIFICATIONS

Cut Capability:	10kN, 3.2mm diameter High Tensile Steel wire.
Cutting Blade:	High Tensile Steel
Cage:	Aluminium or Stainless Steel.
Length:	Variable wire cutter blade length options available.
Mass:	~12kg
Dismantled Dimensions (L x W x H):	300mm x 800mm x 800mm (Removal of 8x screws).